



River Eden Sustainability Partnership

10th February 2025

Castlehill Community Hall


**THE CARMAN
FAMILY
FOUNDATION**



INSPIRING SCOTLAND

Why RESP?



A photograph of a riverbed. The water is shallow, revealing a bed of brown sediment and some green weeds. The text is overlaid on the image in white, bold font.

**Water Quality is
'poor' or 'moderate'**

Invasive species

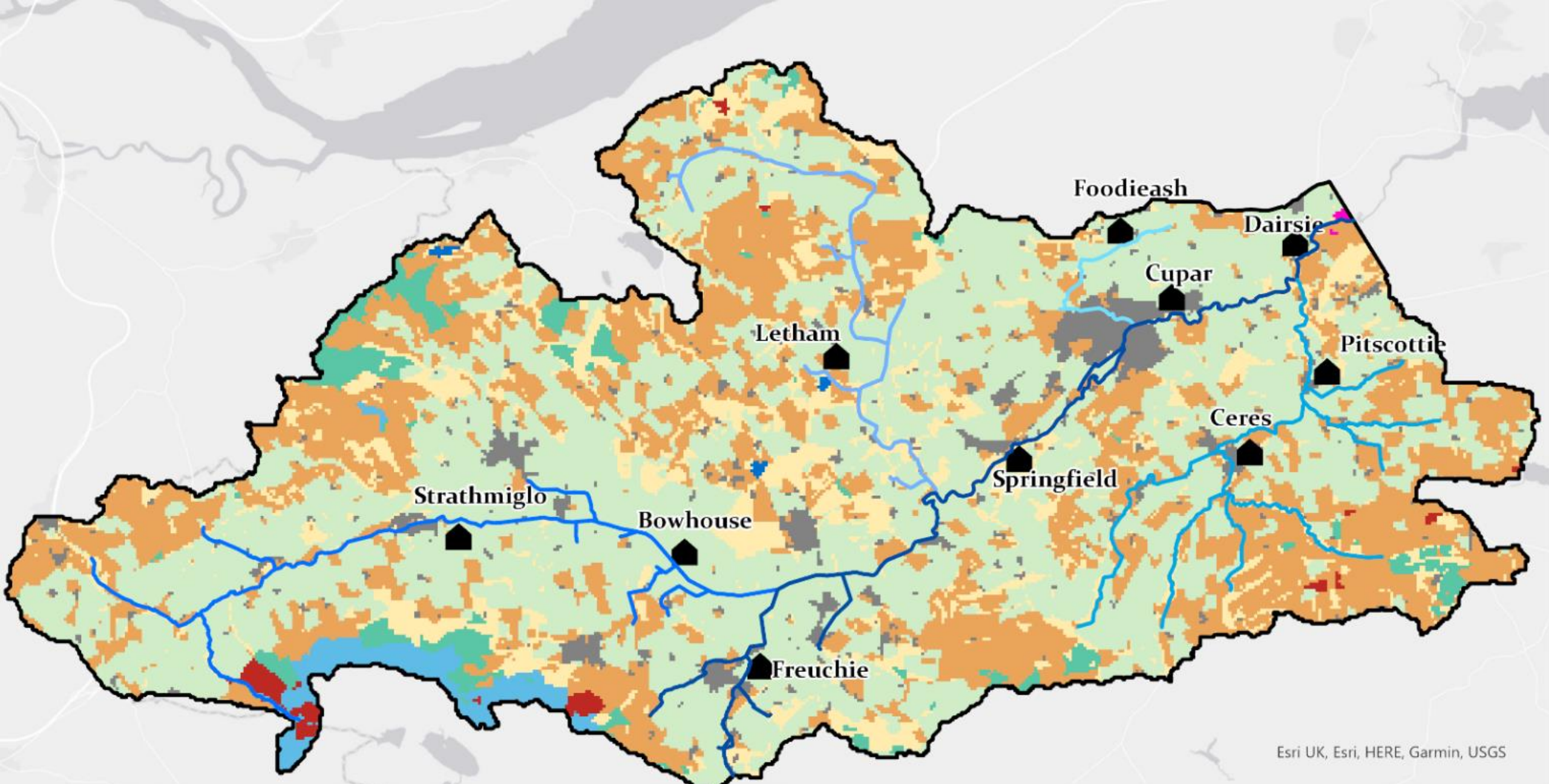
**Reactive
phosphorous**

Diffuse pollution

**Vital river weed has
disappeared**

**Summer drought/
winter storms**

biodiversity loss



A photograph of a beaver swimming in a river. The beaver is in the center of the frame, with its head and shoulders above water. It has long, white whiskers and a dark nose. The water is dark green and slightly rippled. In the background, there are tall, thin reeds or grasses. The overall scene is a natural, outdoor setting.

We want to see...

...a restored river corridor, rich in biodiversity, free from invasive non-native species, resilient to climate change and connected to the community for well-being and economic benefit.

- 
- **A community partnership for the river**
 - **INNS control from source to sea**
 - **Habitat & water quality improvement**
 - **Citizen Science**

Our Ambition...



• **Sustainable Cupar**

• **Eden Angling Association**

• **Fife Coast and Countryside Trust**

• **St Andrew's University**

**The Partners a
year ago...**



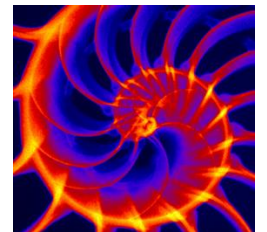
The Partners now River Eden Fife



The River Eden Sustainability Partnership



University of
St Andrews



Our Funding

- **NatureScot – Nature Restoration Fund**
- Shared Prosperity Fund
- Sale of Wemyss Cats & Sustainable Cupar Calendars
- Crown Estates Environment Grants
- Fife Communities Climate Action Network
- **Inspiring Scotland - Neighbourhood Ecosystem Fund**
- Kinkell Byre Rewilding - Ceilidh For Nature
- *New applications in progress...*



Our Surveys

- Landowners
- Invasive species (INNS)
- Habitats
- Habitat improvement
 - Pressures
 - Opportunities
- ‘Species-level’ invertebrate survey
- Tree survey
- Deer management statement
- **eDNA survey of American signal crayfish**

What have we
done so far?



Community Engagement

- Landowner Meetings
- River Eden Days
- Talks in the community
- Scientist research event
- **2000+ volunteer hours**



Citizen Science

Riverfly

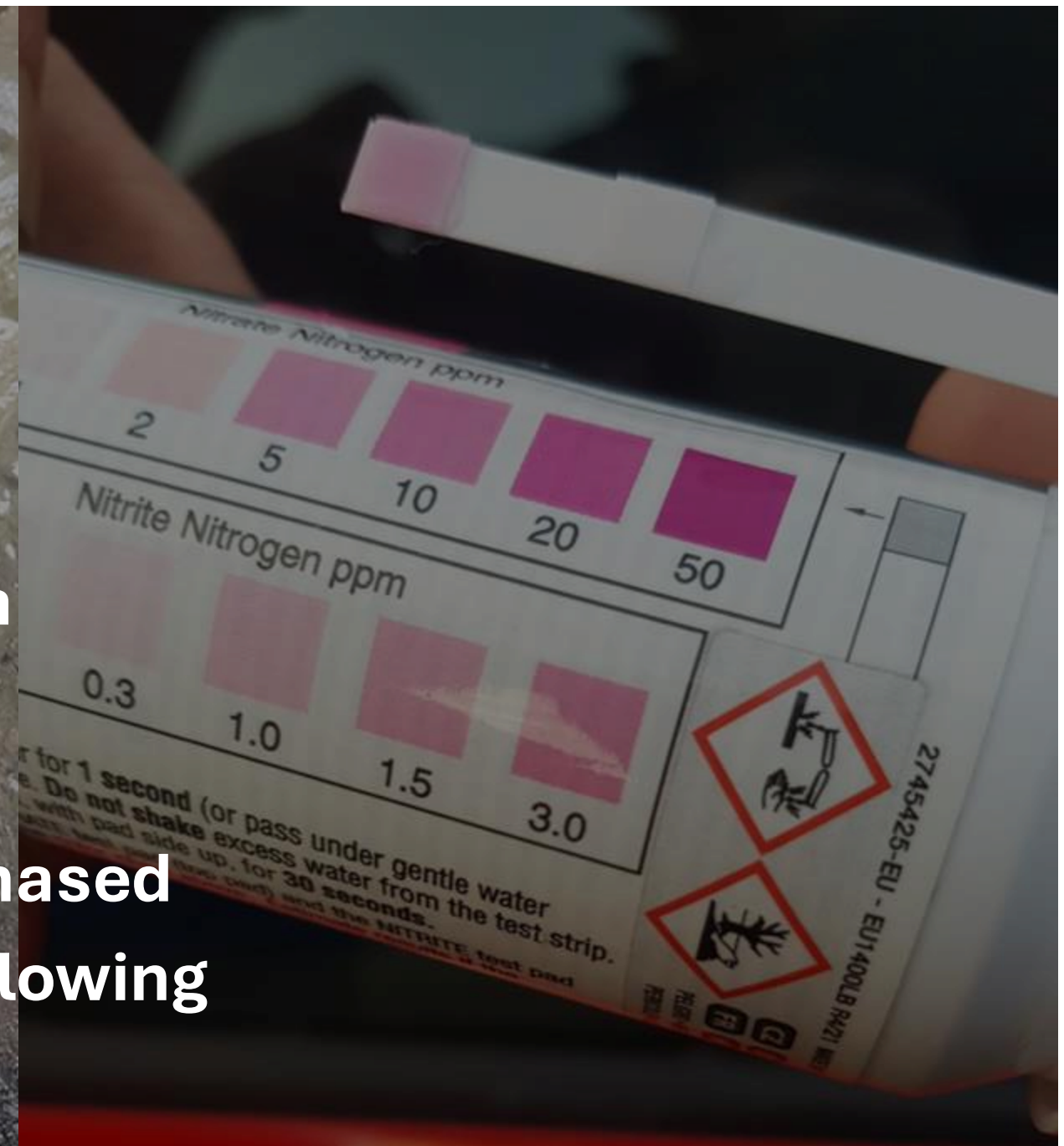


- 24 volunteers trained
- Monitoring 4 sites monthly
- Another 12 volunteers signed up for 2025
- Sessions for school pupils – Pitlessie Primary



Water Quality Monitoring

- 6 sites monitored to create a baseline.
- Discussions with SEPA
- Monitoring equipment purchased
- Volunteers reporting and following up pollution incidents





INNS control

- **Free training**
- **Essential PPE provided**
- **Training offered to local landowners and farmers.**
- **Scottish Water now treating INNS on their assets**
- **Agreements to carry out treatment increasing.**

Website and Social Media

- New website created at www.riveredenfife.org
- Facebook & Instagram social media channels
- Contact Form on website - many new contacts.
- [New 'report a sighting' function](#)

About Us

Projects ▾

Events

Blog

Resources

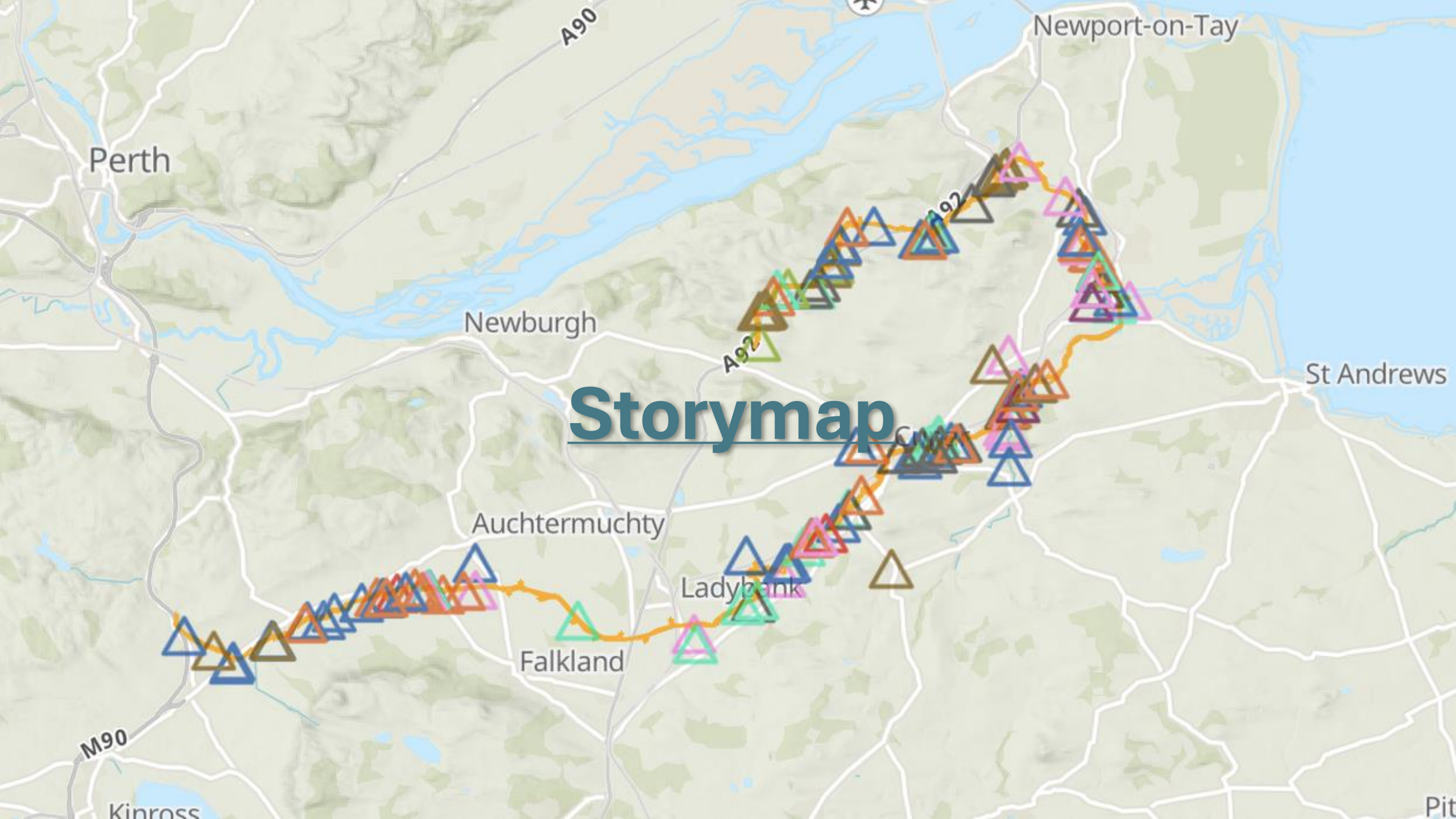
Cont





Governance

- **Management Group established**
- **Collaborative partners group meeting quarterly**
- **Decision made to remain a non-constituted partnership**



Perth

Newport-on-Tay

Newburgh

St Andrews

Storymap

Auchtermuchty

Ladybank

Falkland

M90

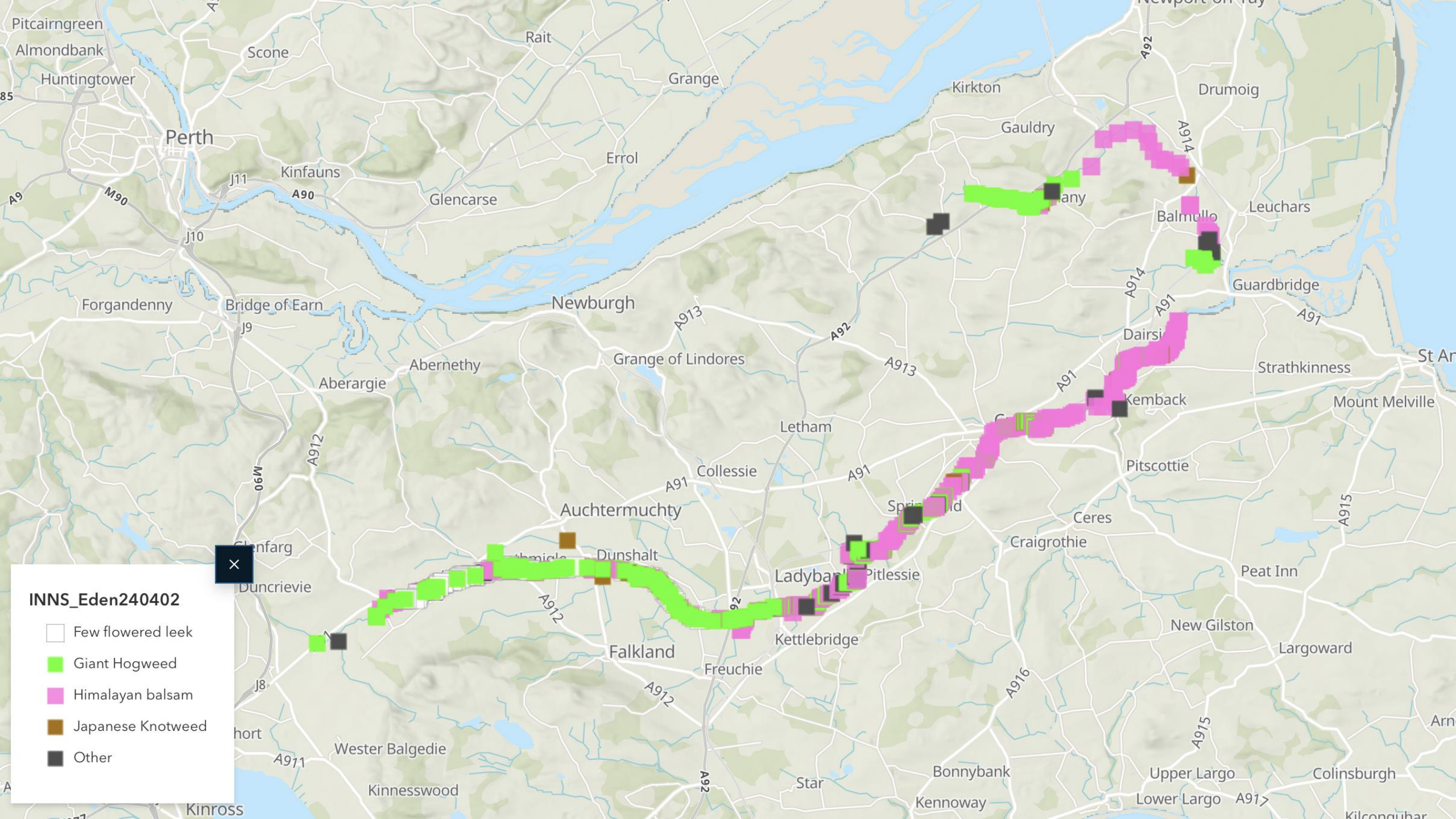
A90

A92

A92

Kinross

Pit



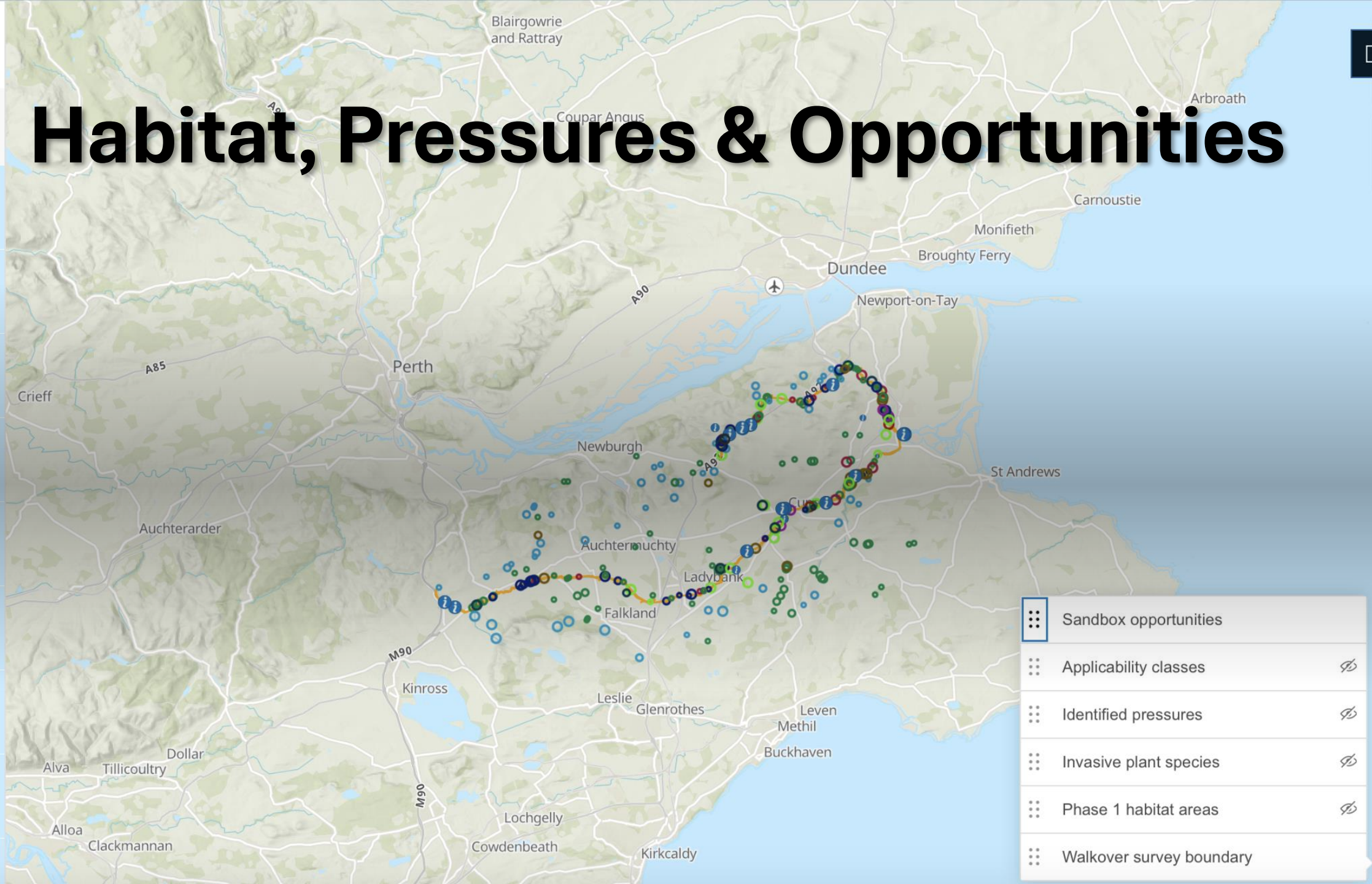
INNS_Eden240402

- Few flowered leek
- Giant Hogweed
- Himalayan balsam
- Japanese Knotweed
- Other

opportunities
count: 287

Habitat, Pressures & Opportunities

4
Protection 13
ment removal 2
2
body structures 106
ams 52
34
ndering 16
tree planting 25





What Next?

Moving into the most important phase of the project...

- **Strengthening the partnership**
- **Transition to DELIVERY**
- **Interpreting the survey results**
- **Working with landowners**
- **Finding common ground**
- **Seeking further funding**



Emerging Projects & Activities

- Moor Road



Emerging Projects & Activities

- Education - Salmon in the Classroom





Emerging Projects & Activities

- **Lady Burn**
- **Buglife Scotland – Project Officer**
- **INNS control 2025**

Emerging Projects & Activities

- Transition to delivery work with James Hutton Institute
- MORE FUNDING APPLICATIONS

INSPIRING SCOTLAND



Contact

restorerivereden@gmail.com

www.riveredenfife.org

 www.facebook.com/riveredenfife/

 **@riveredenfife**