

Landowner Engagement: Transition to Delivery: Project Overview

River Eden Catchment Landowner event
10th of February 2025

Dr Kerr Adams, Dr Miriam Glendell,

Dr Camilla Negri, Dr Paul Quinn, Dr Mark Wilkinson



The James
Hutton
Institute

Scientific Services



THE CARMAN
FAMILY
FOUNDATION

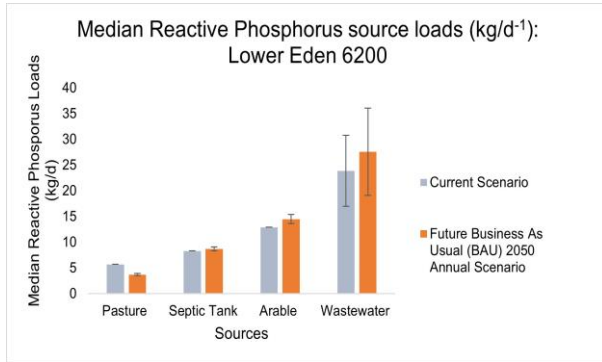


INSPIRING SCOTLAND

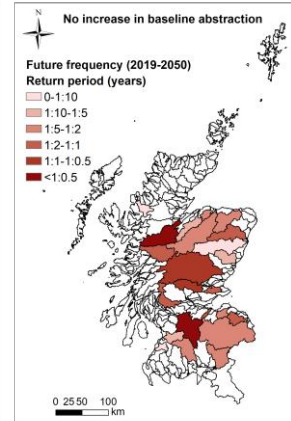
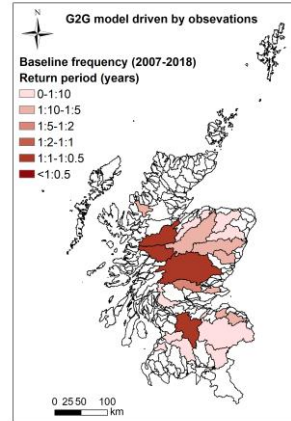
Transition to Delivery: Project Aim

- To deliver landowner engagement activities to gather local perspectives and expertise to facilitate the identification of sustainable water management projects in the Eden and Motray Water catchments.

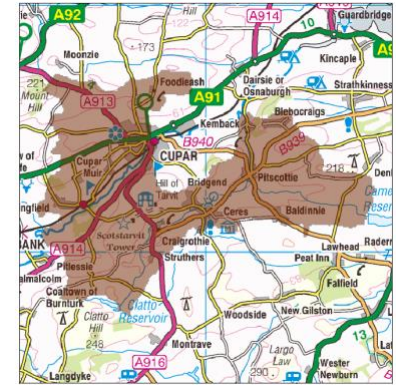
Why do we need sustainable water management?



Water quality issues, mainly phosphorus (P) concentrations from wastewater and diffuse sources. ([Adams et al., 2024](#))

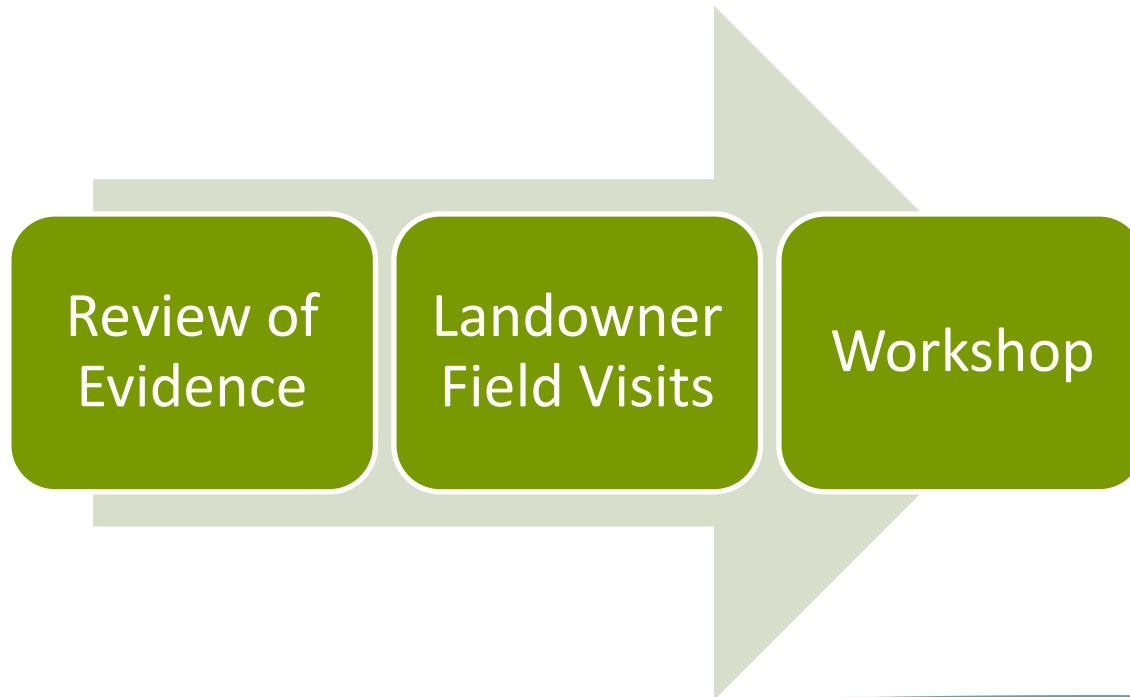


Frequency of significant water scarcity events in the Eden increasing from 1 in 5 (currently) to once a year by 2050 ([Glendell et al, 2024](#))



Flood risk of 260 residential properties in Cupar; average damages of £1.3m ([SEPA, 2015](#))

What are we doing?



Landowner Field Visits

What are the water-related issues in the catchment?

How are the issues affecting landowners?

What current measures are being adopted?

What measures could be adopted?

What are the barriers to adoption?

How can we overcome barriers?

Potential Management Options

Regenerative
Cropping:
Nutrient Budgeting
Cover Crops
Intercropping

Improve resource efficiency, enhance soil bio-physical quality & minimise pollution



Source: Centre for Sustainable Cropping

Potential Management Options

Riparian Zone/ Field margin management



Preventing soil erosion and nutrient run-off

Magic margins

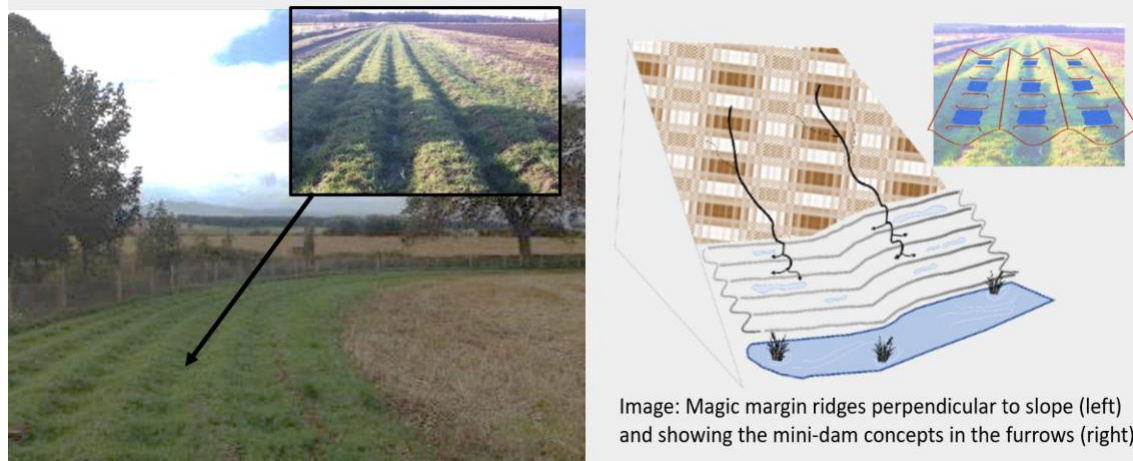


Image: Magic margin ridges perpendicular to slope (left) and showing the mini-dam concepts in the furrows (right)

[Source: Magic Margins via SmarterBuffers](#)

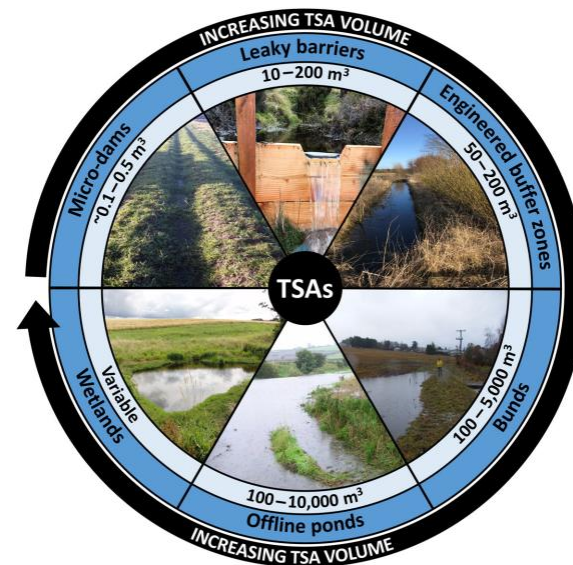
Potential Management Options

Sediment trapping,
water retention,
sustainable drainage

Reducing flood risk, soil erosion and improving
water quality



Source: Sediment traps via
SmarterBuffers



Source: Roberts et al (2022)

Potential Management Options

Irrigation lagoons,
rainwater harvesting



[Source: Farm Advisory Service](#)

Adapting to drought conditions, reducing surface and groundwater abstraction

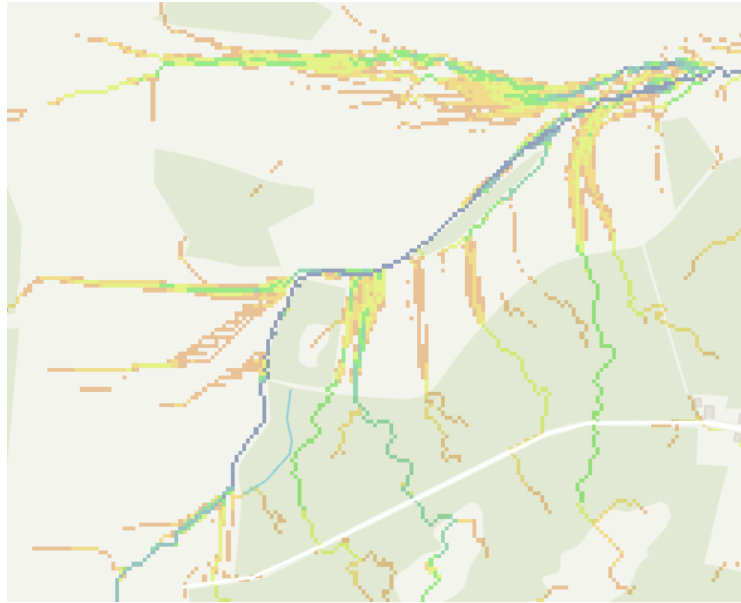
Example Visits



Examples of water retention, cover crops and water margin management

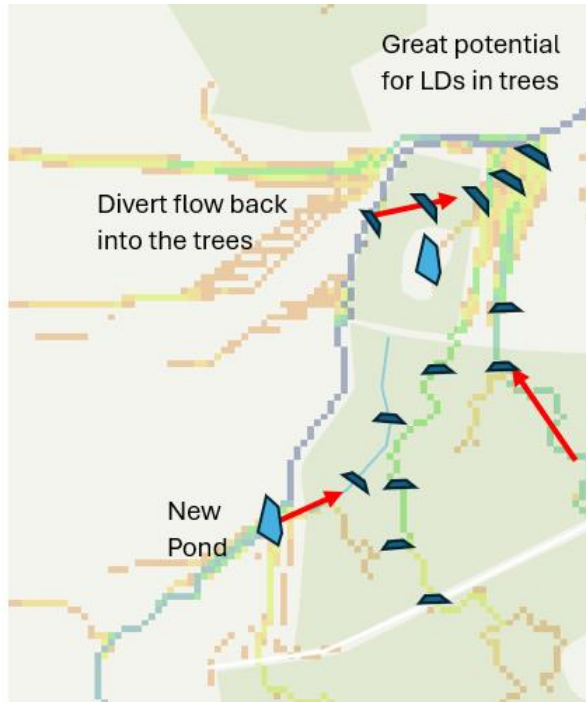
Example Visits

Landowner Issue:
Soil erosion and
flooding

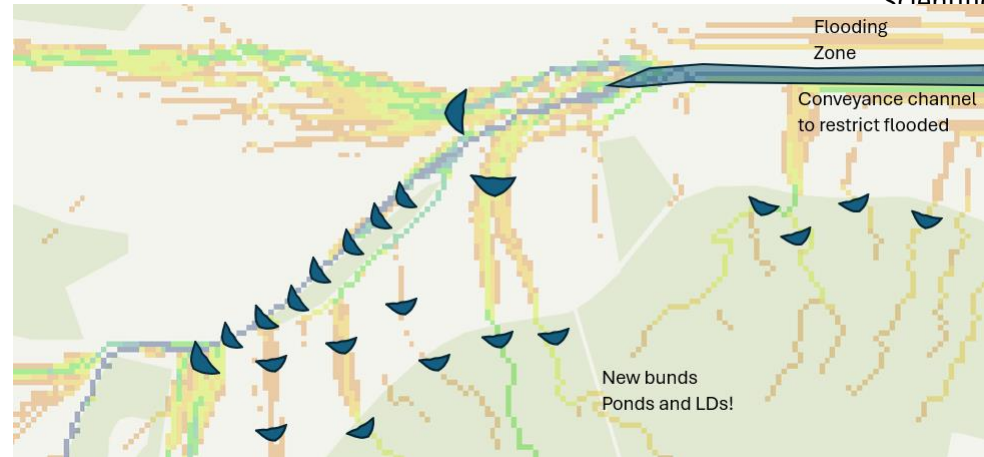


Flow pathway map

Example Visits



Leaky Dams 



During and after the visit we can discuss potential options to address the water-related issues.

Examples here include leaky dams, small ponds and bunds.

Example Visits



Landowner visits allow us to understand the reality of potential management options

Next Steps

Eden Landowner Visits

Implementation,
Finance & Monitoring
Workshop

Catchment Plan,
Recommendations for
RESP

Thanks for listening

We thank the River Eden Sustainability Partnership, Sustainable Cupar, the Eden Angling Association, the Neighbourhood Ecosystem Fund and Inspiring Scotland Partners for supporting and funding the Transition to Delivery Project.